

## Staff List

**Principal** – Carl Stubbs  
**Secretaries** – Shonagh Davis,  
Meggie Gonzalez  
**Custodian** – Brandon West  
**Preschool** – Kristy Campbell  
**Kindergarten** – Elaine  
Champion, Sandra Muir  
**1<sup>st</sup> Grade** – Kathy White, Jennifer  
Casper, Cindy Garrett  
**2<sup>nd</sup> Grade** – Deanna Mendez  
Melissa Allmon, Amberlee  
Walker  
**3<sup>rd</sup> Grade** – Cheryl Threet, Nicole  
Bromley, Nicole Sperry  
**4<sup>th</sup> Grade** – Ashley Allred, Rita  
Lewis, Lorena Rock  
**5<sup>th</sup> Grade** – Shannon King,  
Neresa Nielsen  
**6<sup>th</sup> Grade** – Emilee Corey, Kate  
Gagon, Martha Gourley  
**Reading Recovery** – Teri  
Taggart, Marilyn Smith  
**Special Ed.** – Annett Loveridge,  
KayLyn Christensen  
**Computer Teacher** – Joseph  
Asbury  
**Media Specialist** – Kristin Willis  
**School Psychologist** – Sean  
Gallacher  
**Speech Therapist** – Michele  
Callahan

## PTA Executive Board

President  
Breanne Meline

Presidents-Elect  
Candace Brown  
Julie Taylor

Secretary  
Inger Phelon

Treasurer  
Becky Gibson

## School Community Council

Chair  
Harmony Packer

Parent Members  
Katie Bodily  
Amy Callahan  
Claudine Doyle  
Becky Smith

Staff Members  
Carl Stubbs  
Mellissa Allmon  
Rita Lewis

**941 Orchard Drive**  
Pleasant Grove, UT 84062  
801 610-8121  
[valleyview.alpineschools.org/](http://valleyview.alpineschools.org/)



# Valley View Elementary

## Stakeholder Report 2012 - 2013

**Mission Statement**  
We all step up to learning.

**Vision**  
Valley View is a learning  
community of students,  
parents, and staff who are  
dedicated to stepping into  
the future while maintaining  
Valley View's traditions of  
academic excellence and  
exemplary citizenship.

## Trust Land Report

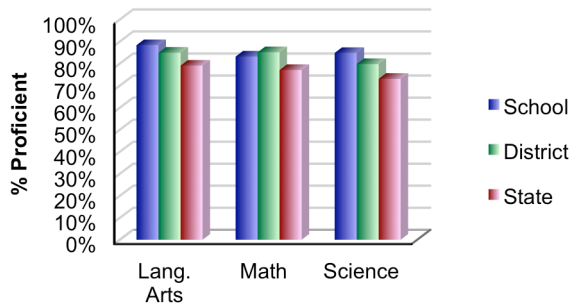
Our School Community Council is in charge of approving our Trust Land Plan and accompanying budget. We were able to pay for classroom aides, teacher training, Accelerated Reading and some technology in the classrooms.

To address the goals of our plan, balanced literacy and balanced math instruction was taught school-wide. Double-dose classes were offered to identified students needing additional instruction. Certified teachers taught the classes. Classroom aides were hired to augment and support daily teacher instruction. Grade level teams collaborated weekly to discuss student progress, review data, and share best practices.

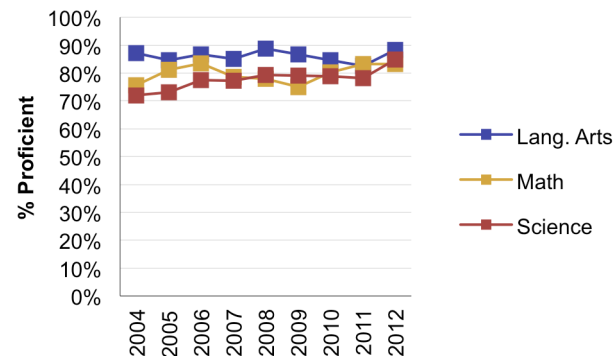
As a school we thank you for your continued support and trust. We feel that we are a success due to the support we receive from our students' parents.

The Utah State Office of Education recently released the state core testing for the 2011 - 2012 school year. Valley View was 88% proficient in language arts, 83% proficient in math, and 85% in science. We increased overall in our academic areas with the exception of math where we were able to maintain the gains made last year. Our school has maintained high levels of student learning over the years. This year as WE ALL STEP UP TO LEARNING we expect to see significant gains in all of our academic areas.

We are continually striving to improve our instructional strategies to meet the needs of each student. Targeted students in first through fourth have been invited to participate in a **double-dose** session with a certified teacher to help them increase proficiency in reading and/or math. We encourage you to have your students participate in double-dose when invited and if you have any questions, please contact the office at 801 610-8121. On Monday collaboration days, teacher teams align instruction with the Utah state core, develop curriculum assessments, evaluate individual student's test data, and develop remediation plans for targeted areas of need.



% Proficient	Lang. Arts	Math	Science
School	88.3%	83.1%	84.8%
District	84.8%	85.1%	79.7%
State	79.0%	77.0%	73.0%



% Proficient	2007	2008	2009	2010	2011	2012
Lang. Arts	85.0%	88.8%	86.8%	84.7%	82.5%	88.3%
Math	78.7%	78.0%	75.0%	80.3%	83.2%	83.1%
Science	77.1%	79.2%	79.1%	78.9%	78.1%	84.8%