

Stakeholder Report



Learn,
Encourage,
Achieve, &
Dream

NOVEMBER 2013



L

Learn: Students are taught by engaging teachers who study and work diligently on the crucial skills necessary to ensure all students learn in student-centered classrooms that meet the diverse needs of each individual student.

E

Encourage: Teachers collaborate within grade level teams as well as with different grade level teams to ensure a cohesive and challenging curriculum that assists students in achieving their highest level of academic success. Each grade level creates assessments to measure individual student achievement and to assist in encouraging differentiated instruction.

A

Achieve: Teachers are determined and focused on students progressing to reach their potential and finding joy and success in academic achievement and social development. So, teachers constantly adjust instruction to optimize student growth and to meet individual learning needs.

D

Dream: Teachers and the community work together to explore and find new, exciting, and challenging programs. Together we integrate these ideas into school curriculum and activities allowing our students to soar to great heights and to dream big.

"Traverse Mountain is unique because of the involvement of the community and parent volunteers that help in classrooms." -Mrs. Marshall (Parent)

"Our School's the best in the whole world! I like it when our teacher teaches us good things. I like it when we make holiday projects." - Olivia 2nd Grade



School LAND Trust Program For 2012-2013

Goals included math, reading and writing:

Math: Our goal was for each grade level to collect data on a low, medium and high achieving student and to measure improvement in math using benchmark assessments. On this sample, students were to improve by either 25 percentage points or reach/surpass 80% mastery on the grade level final benchmark assessments given in April 2013 as compared to the initial evaluation in August 2012. **Results:** 100% of the high performing students, 93% of medium performing students and 93% of low performing students reached this goal.

Reading: Our goal was for each grade level to collect data on a low, medium and high achieving student and to measure improvement in reading using benchmark assessments. On this sample, our goal was for students to make at least one year's growth according to the assessment given at the end of April 2013 as compared to the initial evaluation in August 2012. **Results:** 96% of the high performing students, 96% of medium performing students and 81% of low performing students reached this goal.

Writing: Our goal was for students to complete three writing samples for their Traverse Mountain Elementary Writing Portfolio. These samples demonstrate growth through the year based on the Six Writing Traits. **Results:** Writing portfolios have been established that include three writing samples. Teachers evaluated together using common assessments during collaboration meeting. These progress portfolios will be passed along to the next grade level and given to students at the end of 6th grade.

Student Opportunities

Here are some of the great things happening at Traverse Mountain Elementary:

Ballroom- 3rd- 6th graders competed and won Level 1 trophy.

Lego Club- 5th & 6th graders design robots using critical thinking to solve a designated problem.

Knowledge Bowl- 5th and 6th graders achieved "Top Team" in the intermediate division.

iPads & Kindles- Devises are in every classroom to enhance learning.

Walk More in Four- Congrats to Cameron Swenson who won a bike!

Take Home Reading- A highly successful program for grades K-2 to encourage reading at home every night.

Design Thinking- Stanford/USOE promoted course for human-centered critical and strategic problem solving.

Double Dose- One on one focused attention to advance learning.

Preschool- Four sessions offered.

Dance Festival- Program showcasing a dance by each grade.

Book Fairs- Book Fairs help fund and support our library.

Computers, PE, Art, & Music- We have great Specialties!

School Musical- "Once on this Island" was an amazing way for students and teachers to showcase their talent!

5K- We had a great time running and earning money as a school!

Arts Weeks- Every student had a piece of art hanging in the halls for a week.

Egyptian Museum- Uses Design Thinking to create an exhibit based on a predetermined viewer need.

iBooks/ Crayola Grant- 4th graders created animal *Ebooks* published for iPads.

2012-2013 LAND Trust Accountability

\$35,316 Total Available Funds

- **52% Salaries and Benefits** – This paid for the hiring of classroom aides to assist with differentiated learning as well as hiring of a part-time FTE to reduce class size.
- **43% Technology** – This paid for iPad mini's for the classrooms and a portion of our new Chrome lab. (The district provided the rest of the funds).
- **5% Professional Development** – This paid for teachers to attend professional training and conferences. Valuable skills were taught in reading strategies and in how to teach students to take an active role in their own learning through self-motivation.

"It's unique to have amazing teams at each grade level who collaborate together!"
-Mrs. Crockett 4th Grade

"I like our school because it helps me learn so I can do better in math. I can be with friends and have fun too!"
-Jackson 3rd Grade





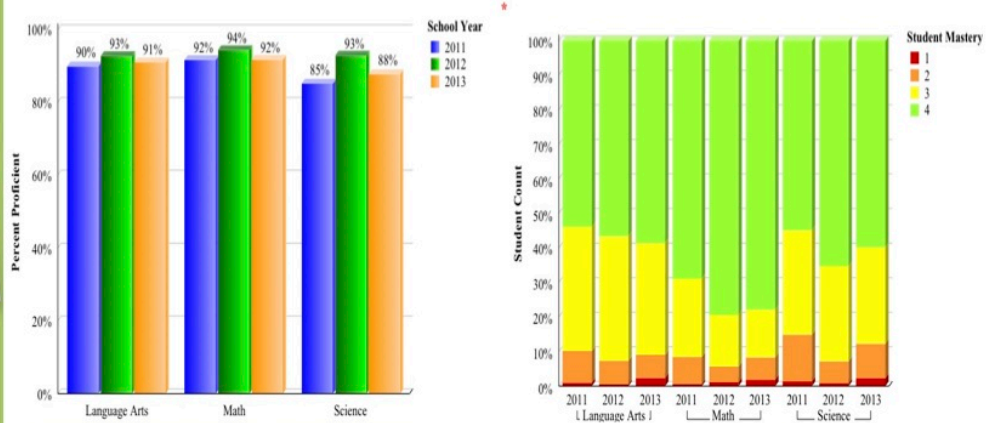
"Our school has nice teachers and we get to do a lot of fun stuff like play with magnets. One of the things we did for matter is put soap in a microwave and it got real big." –Cole 5th Grade



"Our teachers are devoted to the students. Our school is unique because of the depth and passion we use in the classroom." –Mrs. Smith 2nd Grade

CRT Proficiency Summary for: TRAVERSE MOUNTAIN SCHOOL

		2011			2012		
		Student Count	Proficient Count	Percent Proficient	Student Count	Proficient Count	Percent Proficient
Language Arts	Lang 3	82	76	93%	119	110	92%
	Lang 4	91	82	90%	83	78	94%
	Lang 5	64	55	86%	87	79	91%
	Lang 6	58	52	90%	66	62	94%
	Summary(Test)	295	265	90%	355	329	93%
Math	Math 3	81	73	90%	119	114	96%
	Math 4	91	84	92%	83	81	98%
	Math 5	66	61	92%	86	82	95%
	Math 6	58	53	91%	66	57	86%
	Summary(Test)	296	271	92%	354	334	94%
Science	Sci 4	91	74	81%	83	79	95%
	Sci 5	66	58	88%	87	80	92%
	Sci 6	58	51	88%	66	60	91%
	Summary(Test)	215	183	85%	236	219	93%



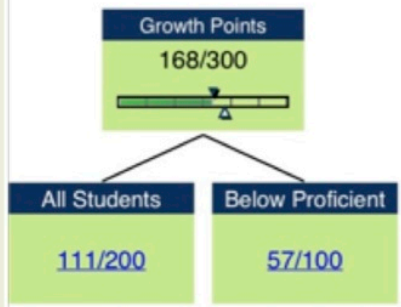
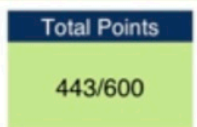
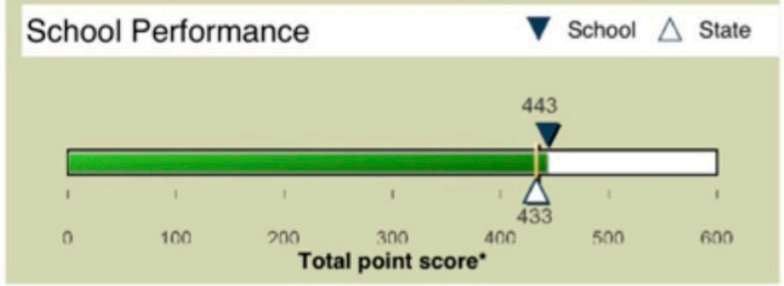
School Grading

ALPINE DISTRICT
 TRAVERSE MOUNTAIN SCHOOL
 Grades PK-06

Overall 436/600 Points 73% Percent B Grade

Proficiency	Points Earned
Language Arts	91/100
Mathematics	92/100
Science	89/100
Total Proficiency	272/300

Growth	Points Earned
All Students	Language Arts: 29/50 Mathematics: 26/50 Science: 31/50
Below Proficient	Language Arts: 30/50 Mathematics: 23/50 Science: 25/50
Total Growth	164/300



Grades Tested: 03-06

- ▶ **Principal:** Ilene Strong
- ▶ **Number of Teachers:**
- ▶ **Enrollment:** 809
- ▶ **Minority:** 82
- ▶ **English Learners:** 3%
- ▶ **Low Income:** 13%
- ▶ **SWD:** 8%



The School Community Council (SCC) connects our parents and faculty with a single goal to improve academic performance. Traverse Mountain Elementary receives an annual dividend from the Utah State School LAND Trust Program. The SCC is parent run and decides how these funds will be distributed. Nominations, followed by elections, happen at the beginning of every school year. The agenda and minutes can be accessed from the school website: traversemountain.alpineschools.org under the PTA/SCC menu. If Internet is unavailable the school welcomes parents to the school library to access notes from previous meetings.



Traverse Mountain PTA hit the ground running this school year! We have worked hard to continue our favorite "tiger traditions" such as the Fall Carnival and Take Home Reading. We were so excited to introduce the new traditions of Back-to-School Kick-off Kickball Game and Monster Mash. Our goal as a PTA is to plan and provide activities/programs that will enrich our school, community, and homes. We strive to focus on the needs of children and support the teachers in their valiant efforts. -Mindy Widdowson

School Community Council

Parent Board Members

- Kimberly Kosorok (co-chair)
- Rachelle Funk
- Janelle Wride
- Kristy Knowlton
- Matt Smith
- Natalie Hill
- Krista Isaacson

Faculty Board Members

- Ilene Strong
- Dee Lawler (co-chair)
- April Leder
- Austin Cowley
- Britt Rohde



2500 W. Chapel Ridge Rd.
Lehi, UT 84043
(801) 610-8725
traversemountain.alpineschools.org

PTA Executive Board

President: Mindy Widdowson

President Elect: Stephanie McDonald

Secretary: Jillian Plewe
Treasurer: Shellie VanOrman

Membership VP: Robin King

Membership VP: Kristen Bagley

Leadership VP: Kelly Tate

SCC Meeting Schedule:

Every 3rd Thursday of the month except in December and May.
Oct. 17, Nov. 21, Jan. 16,
Feb. 20, Mar. 20, Apr. 17
@ 3:45 in the Library.

