

## PARENT TEACHER ASSOCIATION

Marie Anderson	Co-President
Lynne Bruening	Co-President
Sarah Beeson	Legislative VP
Erin Roudabush	Leadership VP
Laura Leavitt	Secretary
Melinda Matheson	Treasurer
Sonnet Udy	Teacher/Faculty
Peggy Crandall	Administrative VP

PTA meetings are held in the Faculty Room on the second Wednesday of the month at 9:30 am. Parents are welcome to attend. Due to room size and in order to focus on the needs of our school, please make arrangements for children not to attend.



Writing Assembly featuring author Sam Beeson.

Shelley Service Club helping with our Thanksgiving Food Drive.



A cheering welcome on the first day of school.

## SCHOOL COMMUNITY COUNCIL

Sarah Beeson	Parent/Chair
Carol Anderegg	Parent/Vice-Chair
Jonny Bradshaw	Parent
Michelle Dolinar	Parent
Christine Rich	Parent
Andrea Walters	Parent
Peggy Crandall	Principal
Angi Cummings	Teacher
Brandon Engles	Teacher
Jeff Freeman	Teacher

SCC meetings are held in the Conference Room on the first Wednesday of the month at 2:30 pm. The agenda is posted in the main entry one week prior to meetings.

To learn more about what the school community council is responsible for, please visit our webpage ([http://shelley.alpineschools.org/?page\\_id=105](http://shelley.alpineschools.org/?page_id=105)) on the Shelley website. You can also find the monthly agendas, minutes from meetings, and contact information for all of the council members on the website.

# SHELLEY ELEMENTARY

CHAMPIONING INDIVIDUAL  
STUDENT LEARNING



## STAKEHOLDERS REPORT ACADEMIC RESULTS 2010-2011

We are pleased to present to the patrons of Shelley Elementary School our annual progress report. The information contained in this pamphlet includes our progress under the federal No Child Left Behind (NCLB) Act.

## Contact Information

Phone: (801) 756-8540

Website:  
<http://shelley.alpineschools.org>



## NO CHILD LEFT BEHIND

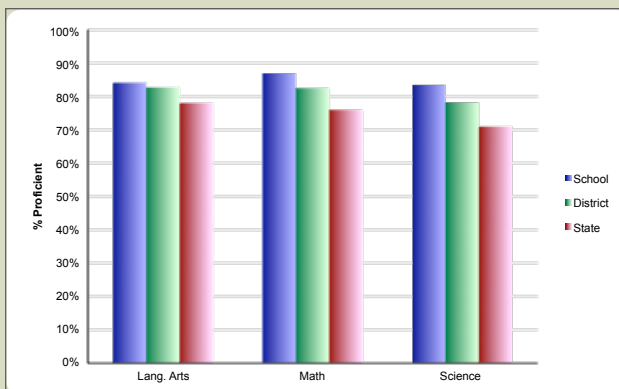
Each May students participate in assessments to determine Adequate Yearly Progress (AYP). NCLB (No Child Left Behind) requires that each state establish a measurable goal in the areas of Language Arts and Math. As a school, students must show mastery or near mastery of the given subject as outlined in the state core objectives. For 2010-2011 school year, NCLB required a pass rate of 83% in Language Arts and 45% in Math (this low score is due to the need of getting a baseline because of the change to a new test). Our overall school pass rate in Language Arts was 85%, our pass rate in Math was 87%.

In addition to the overall pass rates, students' achievement must also be measured in subgroups. These subgroups include ethnic, English as a second language, economic, and students with disabilities. If any of the subgroups does not make adequate yearly progress, the entire school will not receive a passing grade according to NCLB guidelines. The chart below shows the AYP rating for Shelley Elementary.

YEAR	AYP MATH	AYP LANGUAGE ARTS
06-07	PASS	PASS
07-08	PASS	NOT PASS
08-09	PASS	PASS
09-10	PASS	PASS
10-11	PASS	PASS

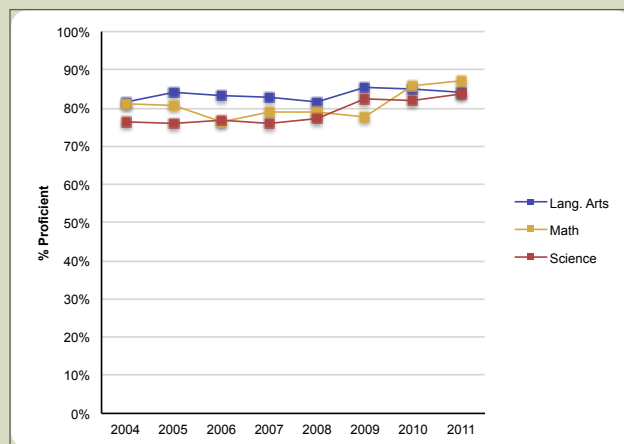
For additional information regarding NCLB and AYP, please visit the Utah State Office of Education's Accountability webpage at <http://www.schools.utah.gov/data/Educational-Data/Accountability-School-Performance.aspx> or call Principal Peggy Crandall at (801) 756-8540.

## 2011 CRT COMPARISON TO DISTRICT AND STATE



	LANGUAGE ARTS	MATH	SCIENCE
SHELLEY	84.1%	87.0%	83.5%
DISTRICT	82.8%	82.4%	78.3%
STATE	78%	76.0%	71.0%

## END OF YEAR STATE CRT PROFICIENCY TRENDS



## SHELLEY ELEMENTARY CHEERING ON LEARNING

Employees.....	75
Teachers.....	42
Average Years of Teaching Experience.....	14
Master's Degree.....	6
Teachers with an Endorsement (Endorsements are 20+ additional graduate class hours after a Bachelor's Degree)	
Reading.....	4
ESL.....	3
Dance.....	2
Gifted and Talented.....	2
Art.....	1
Early Childhood.....	5
PE.....	1
Math.....	2
Members of Professional Organizations.....	30



Mrs. McGee receiving KSL's Teacher Feature.