

**School Improvement Plan:**

Sage Hills Elementary will focus on literacy to improve students Language Arts CRT 1-3%. Students will be monitored through CRT, DRA2, DIBLES, and common assessments. Extended learning opportunities will be offered to students who do not understand concepts. Kindergarten teachers will Tutor/Double dose to help with early interventions.

**ALPINE SCHOOL DISTRICT**

**Mission:** "Educating all students to ensure the future of our democracy."

**Vision:** Becoming a Professional Learning Community that answers Four Essential Questions and Exemplifies Six Characteristics: Shared MVVG, Collective Inquiry, Collaborative Teams, Action Oriented, Results Orientation, and Continuous Improvement.

**Values:**

\*To prepare our students for responsible participation in a democracy.

\*To ensure all students can participate in the entire education program.

\*To promote a caring and effective connection between teacher and student.

\*To foster individual ownership of the education program among all members of the educational family.

**Goals:**

Student Achievement, Teacher Quality, Comprehensive Curriculum, Leadership, School & District Culture, Community Relations, and Resources.

**Community Council Members:**

**Chairperson:** Mindy Greene

**Co-Chairman:** Jory Schmidt

**Principal:** Sherrie Holbrook

**Members:**

Mindy Greene

David & Kristen Hood

Deborah Johnson

Tineka Shoemaker

Christie Eager

Kirsten Strack

Aimee Keiffer

**School Members:**

David Bates

Joy Bennett

Rebecca Ray

**2011-12 Meeting Schedule**

4:00 pm in Conference Room

Sept. 7, 2011

Nov. 7, 2011

January 4, 2012

March 7, 2012

April 4, 2012

**PTA Board**

**President:** Kris Anderson

**Executive Board Members:**

Nicole Jaussi

Kirsten Strack

Shelly Poduska

Genevieve Simpson

Jenn Bott

**Sage Hills Mission Statement:**

**"Educating all students to recognize and achieve at their highest potential."**

**Sage Hills Elementary**



**Stake Holder Report  
2011-2012**

SAGE HILLS  
ELEMENTARY  
3033 SWAINSON AVE.  
SARATOGA SPRINGS,  
UTAH 84045  
Telephone: 801-610-8723  
Fax: 801-341-5915  
Sherrie Holbrook,  
Principal



**"Thunderhawks  
Fill Others'  
Buckets"**

## 2011-12 School Land Trust Plan

Sage Hills School Community Council determines how our allocation of the Utah Trust Land Funds will be spent. This funding is used to support student needs and to facilitate our school goals. The following are the areas supported by our Utah Trust Lands Funding:

- Six Thousand Dollars was allocated for kindergarten teachers to implement, pre-teach and re-teach one extra hour per school day (Tutoring/Double-dosing).
- Five Thousand Dollars was allocated for kindergarten teachers to implement, pre-teach and re-teach one extra hour per school day.
- One Thousand Dollars was allocated towards the Take Home Library for a Para educator, supplies, and new-leveled reading books.
- Sixteen Thousand Dollars was allocated for Para educators to give identified students additional exposure to curriculum through pre-teaching and re-teaching in a small group setting under the direction of the classroom teacher.

\*\* All money is allocated by the members of SCC who were voted in to this position by neighborhoods. All financial matters regarding Land Trust are transparent and patrons are welcome to view these at <http://www.schoolandtrust.org>.

We always follow the plan and money as allocated. Nothing is ever done without SCC approval, District approval, and State approval. If you have any questions regarding SCC, feel free to contact Mindy Greene, SCC Co-chair, Jory Schmidt, Co-Chair, or Mrs. Holbrook, Principal.

## ADEQUATE YEARLY PROGRESS (AYP)

The Criterion-Referenced Test (CRT) is used for No Child Left Behind (a national assessment of school performance) and the U-PASS (a state assessment of school performance used in conjunction with the No Child Left Behind Act).

On our 2010-2011, Sage Hills students **MET** adequate yearly progress. We continually review data to improve student learning and teacher instruction.

We will continually work to improve our efforts to provide a high-quality education for all students.

## PROFESSIONAL LEARNING COMMUNITY

Every Monday, Sage Hills teachers collaborate as grade-level teams to focus on student learning. Teams study various sources of data to determine areas that need different or more intensive instruction.

Teacher conversations are based on 4 questions:

1. What do we expect students to learn?
2. How will we know what students have learned?
3. How will we respond to students who aren't learning?
4. How will we respond to students who already know the material?

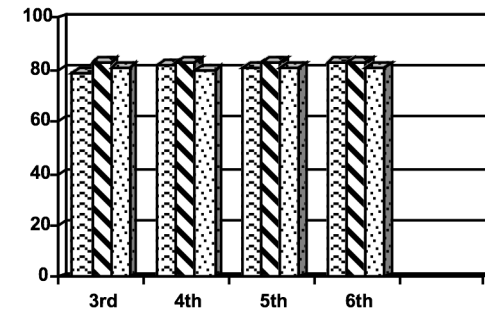
As part of this process, teachers have:

- Developed curriculum maps based upon Utah State Core to ensure all students are receiving equal access to a viable curriculum.
- Developed Power Essential Standards aligned with Utah State Core and curriculum maps.
- Developed common grade level assessments to help monitor individual student progress.
- Improve teaching methods in order to offer students what they need to move forward.

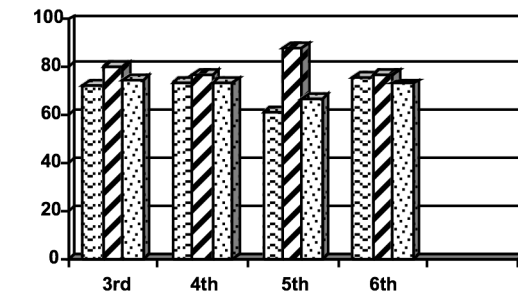
## 2011 Utah State End of Level Testing:

Each year Utah students take a Criterion Referenced Test to assess their knowledge of state academic standards. The following graphs show the percent of Sage hills students who scored at the 'proficient' level, compared with the percent of students scoring proficient in Alpine District and in the state.

LANGUAGE ARTS PROFICIENCY PERCENT



MATH PROFICIENCY



Legend: Sage Hills (diagonal lines), Alpine School (checkered), Utah State (dotted)