

Northridge Elementary HANDBOOK 2014-2015

Have a great year!



Home of the Nighthawks

Northridge Elementary
1660 North 50 East
Orem, Utah 84058
801-610-8114
www.northridge.alpineschools.org

Northridge Calendar 2014-2015



Aug 15	Open House 4:00-6:00 pm
Aug 19	First Day of School
Aug 26	First Day of Kindergarten
Sept 1	LABOR DAY
Sept 18	School Pictures
Sept 26	Minimal Day-Early Out
Oct 8 & 9	Parent Teacher Conferences 4-7:30 pm
Oct 16 -20	Fall Break
Oct 23	Picture retakes
Oct 31	Halloween Parade
Nov 14	Minimal Day-Early Out
Nov 26	Teacher Comp Day-No School
Nov 27&28	Thanksgiving Break
Dec22-Jan2	Christmas Break
Jan 19	MARTIN LUTHER KING Jr. DAY
Feb 4&5	Parent Teacher Conferences 4-7:30 pm
Feb 16	Washington-Lincoln Day
Mar 9	Professional Development Day
Apr 6	Snow Make-up Day-No School
Apr 7	Teacher Comp Day-No School
Apr 8-10	Spring Break
May 25	Memorial Day
May 29	Last Day of School (Common Day)

Welcome to school for another great year. We are all fortunate to be a part of the wonderful community at Northridge. Thank you for the support and encouragement you provide to the school and to your children each day. We are committed to our school mission,

**“AS NORTHRIDGE NIGHTHAWKS WE
SOAR AS LEARNERS THROUGH HARD
WORK AND DETERMINATION
ACHIEVING OUR HIGHEST POTENTIAL”**



DAILY BELLS

8:00 am Track A begins
9:15 am Track B begins
2:15 pm Dismissal for Track A
3:30 pm Dismissal for Track B

AM Kindergarten 9:15 am – 12:08 pm
PM Kindergarten 12:38 pm – 3:30 pm

COLLABORATION DAY DISMISSAL

1:25 pm Dismissal for 8:00 Students
2:40 pm Dismissal for 9:00 Students

WHAT PARENTS CAN DO TO HELP:

How can parents best help their child succeed in school? Research indicates that a key factor in success of the individual child is their parents' attitude toward education. The following suggestions are helpful.

- *Read to or with your child often.
- *Send your child to school daily, on-time, fed and dressed for the weather.
- *Assist your child with homework by encouraging your child to complete assignments on time.
- *Communicate with your child's teacher to insure their needs will be met.
- *Verbally recognize teachers and school staff when your child is present.
- *When possible, plan vacations, doctors appointments after school.
- *Join the Parent Teacher Association.

SCHOOL VISITORS/VOLUNTEERS

Parents are always welcome at Northridge. If you wish to meet with your child's teacher, please schedule a time either before or after school. **FOR THE PROTECTION OF OUR STUDENTS, WE REQUIRE INDIVIDUALS TO CHECK IN AT THE OFFICE DURING THE SCHOOL DAY.**

PTA – PARENT TEACHER ASSOCIATION

The National PTA Mission Statement is to “assist parents in developing the skills they need to raise and protect their children, and to encourage parents and public involvement in the public schools.”

We are fortunate to have an outstanding PTA board and tradition of service here at Northridge. We value and appreciate the time spent by parents to help our school. Parent involvement is critical to our success. We need you! The more parents become involved, the stronger we become as a school community.

COMMUNITY COUNCIL

The responsibilities of the Northridge Community Council are as follows, “To look at the needs of the school and formulate the School Improvement Plan.” The council is also in charge of safe walking routes to and from school. The council advises the administration on local issues.



SCHOOL VISITORS/VOLUNTEERS

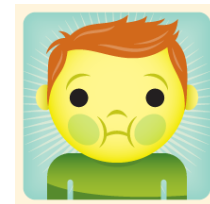
Parents are always welcome at the school. If you would like a conference with your child’s teacher, please try to schedule a time either before or after school.

For the protection of our students and the security in the school, we require that any person entering the building during the school day check in at the office.

ATTENDANCE

Students do better in school when they attend school regularly. Please do not keep children out of school unless they are ill.

- *Please schedule doctor, dentist and orthodontist appointments after school hours.
- *Parents are encouraged to notify the school of their child’s absence.
- *Please keep your child home if they are ill.
- *You will be notified if your child becomes ill or injured at school.





MEDICATIONS

Students who require medication during school hours must have a form signed by the child's doctor. Medications should be brought in the original container to the office by a parent. Children are not allowed to bring any medication to school.

SAFE SCHOOL POLICY

We follow the Alpine School District Safe School Policy, which states, "Students who bring, drugs, guns, weapons, or other dangerous substances, even look-alikes will be brought before an administrative hearing and may be expelled from school for up to one year". It is our goal at Northridge to provide a positive environment where all children feel safe.

REPORT CARDS

Official report cards are issued three times during the school year. Teachers may send progress reports at any time. Parents are encouraged to regularly review their child's progress on Skyward, which is found on the Alpine School District website.

FEES, DONATIONS, SUPPLIES

In accordance with Utah State Law, fees are not charged in grades K-6. Grade level requests for donations may appear on your child's disclosure document. Donations are welcomed but no child is required to make a donation.



DROP-OFF & PICK-UP GUIDELINES

Please follow all road signs including the entrance and exit. Use the lane nearest the curb (lane 1) as the drop-off and pick-up lane only. **THIS IS NOT A LANE TO LEAVE YOUR CAR UNATTENDED EVEN FOR A FEW MINUTES.** The middle lane (lane 2) is for pulling in and out of lane 1 only and moving into lane 3 to exit the parking lot. **PLEASE DO NOT DROP OFF ANY CHILDREN FROM LANE 2!!** The outside lane (lane 3) is for thru traffic, pulling in and out of parking stalls, and to exit the parking lot. When dropping off or picking up your children, please pull forward as you can.

DISCIPLINE

The goal of our school discipline plan is to teach children responsibility for their own behavior and to make wise choices. When behavior occurs that is of significant nature, parents will be notified and we will work as a team to determine how to best teach this responsibility. We follow Alpine District policies and guidelines when discipline is needed.

DRESS STANDARDS

We adhere to the guidelines set up by the Alpine School District policy 5152.

*Appropriate clothing includes: knee-length shorts and skirts, tops covering shoulders, chest, back, and midriff. Clothing with inappropriate language or pictures is prohibited. If a student's appearance is inappropriate, the student may be asked to call home for a change of clothes.

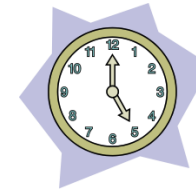
*Hairstyles distracting in appearance or needing constant attention are not acceptable. Hats should not be worn in the building.

*Footwear such as flip flops are discouraged for safety reasons.



ARRIVING AT SCHOOL

Please do NOT send students to school early. In case of inclement weather, students may wait inside the building in the small gym, 15 minutes before school starts, which is 7:45 for 8:00 students and 9:00 for 9:15 students.



INCLEMENT WEATHER

On rainy or bad winter days students will stay inside in the small gym. If the temperature or wind chill is at 20 degrees the students will be kept inside. We will also follow the Utah air quality guidelines to determine poor air quality.

FAMILY VACATIONS

Families are encouraged to take vacations during the summer and during school breaks. In the event that this is not possible, please inform your child's teacher. It is the parent's responsibility to contact teachers about make-

up assignments. Please use the official form, provided by the school, to notify the teacher and the office in advance.

BICYCLES, SCOOTERS, SKATEBOARDS, ROLLARBLADES, ROLLER SHOES

Please use the following guidelines:

1. Use only the sidewalk
2. Please walk bikes and scooters on the school grounds.
3. Park bikes in designated areas.
4. Roller shoes are not permitted inside the school.
5. Scooter are to be folded up and carried to the classrooms.



DISRUPTIVE ITEMS

Students should not bring cell phones, iPod's, or toys to school. Such items may be taken away from the student and the parent will be required to pick the item up from school. We find sometimes these items are lost or stolen.