

# Northridge Elementary HANDBOOK 2013-2014

Have a great year!



Home of the Nighthawks

Northridge Elementary  
1660 North 50 East  
Orem, Utah 84058  
801-610-8114  
[www.northridge.alpinedistrict.org](http://www.northridge.alpinedistrict.org)

# Northridge Calendar 2013-2014



- Aug 16 Open House 3:00-5:00 pm
- Aug 20 First Day of School
- Aug 27 First Day of Kindergarten
- Sept 2 LABOR DAY
- Sept 3-6 Safety Week
- Sept 13 School Pictures
- Sept 20 PTA Carnival
- Oct 2 & 3 Parent Teacher Conferences 2:30-7:30
- Oct 9 Walk to School Day
- Oct 10-11 Fall Break
- Oct 14 Professional Day-No School
- Oct 17-20 Red Ribbon Week
- Oct 24 Picture retakes
- Oct 31 Halloween Parade
- Nov 20-22 Thanksgiving Break
- Dec 23-Jan.3 Christmas Break
- Jan 20 MARTIN LUTHER KING Jr. DAY
- Feb 5 & 6 Parent Teacher Conferences 2:30-7:30
- Feb 17 PRESIDENTS DAY
- Feb 19-21 Clear Creek
- Mar 10 Professional Day-No School
- Apr 7-11 Spring Break
- May 5-9 Teacher Appreciation
- May 28 Memorial Day
- May 31 Last Day of School (Common Day)

Welcome to school for another great year. We are all fortunate to be a part of the wonderful community at Northridge. Thank you for the support and encouragement you provide to the school and to your children each day. We are committed to our school mission,

**“AS NORTHRIDGE NIGHTHAWKS WE  
SOAR AS LEARNERS THROUGH HARD  
WORK AND DETERMINATION  
ACHIEVING OUR HIGHEST POTENTIAL”**



### **DAILY BELLS**

8:00 am Track A begins  
9:15 am Track B begins  
2:15 pm Dismissal for Track A  
3:30 pm Dismissal for Track B

AM Kindergarten 9:15 am – 12:00 pm  
PM Kindergarten 12:35 pm – 3:30 pm

### **MONDAY EARLY OUT**

1:15 pm Dismissal for 8:00 Students  
2:30 pm Dismissal for 9:00 Students

**PROFESSIONAL DEVELOPMENT DAYS**  
NO SCHOOL

OCTOBER 14 AND MARCH 10

### **WHAT PARENTS CAN DO TO HELP:**

How can parents best help their child succeed in school? Research indicates that a key factor in success of the individual child is their parents' attitude toward education. The following suggests are helpful.

- \*Read to or with your child often.
- \*Send your child to school daily, on-time, fed and dressed for the weather.
- \*Assist you child with homework by encouraging your child to complete assignments on time.
- \*Communicate with your child's teacher to insure their needs are met.
- \*When possible, plan vacations, doctors appointments after school.
- \*Join the Parent Teacher Association.

### **SCHOOL VISITORS/VOLUNTEERS**

Parents are always welcome at Northridge. If you wish to meet with your child's teacher, please schedule a time either before or after school.

**FOR THE PROTECTION OF OUR  
STUDENTS, WE REQUIRE INDIVIDUALS TO  
CHECK IN AT THE "KEEP N TRACK" STATION  
DURING THE SCHOOL DAY.**

## PTA - PARENT TEACHER ASSOCIATION

The National PTA Mission Statement is to "assist parents in developing the skills they need to raise and protect their children, and to encourage parents and public involvement in the public schools."

We are fortunate to have an outstanding PTA board and tradition of service here at Northridge. We value and appreciate the time spent by parents to help our school. Parent involvement is critical to our success. We need you! The more parents become involved, the stronger we become as a school community.

## COMMUNITY COUNCIL

The responsibilities of the Northridge Community Council is as follows; "To look at the needs of the school and formulate the School Improvement Plan." The council is also in charge of safe walking routes to and from school. The council advises the administration on local issues.



## ATTENDANCE

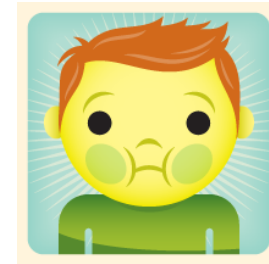
Students do better in school when they attend school regularly. Please do not keep children out of school unless they are ill.

\*Please schedule doctor, dentist and orthodontist appointments after school hours.

\*Parents are encouraged to notify the school if their child is absent.

\*Please keep your child home if they are ill.

\*You will be notified if your child becomes ill or injured at school.



## MEDICATIONS



Students who require medication during school hours must have a form signed by the child's doctor. Medications should be brought in the original container to the office by a parent. **Children are not allowed to bring any medication to school.**

## SAFE SCHOOL POLICY

We follow the Alpine School District Safe School Policy, which states, "Students who bring drugs, guns, weapons, or other dangerous substances, even look-alikes will be brought before an administrative hearing and may be expelled from school for up to one year". It is our goal at Northridge to provide a positive environment where all children feel safe.

## FEES, DONATIONS, SUPPLIES

In accordance with Utah State Law, fees are not charged in grades K-6. Grade level requests for donations may appear on your child's disclosure document. Donations are welcomed but no child is required to make a class donation.



## REPORT CARDS

Official report cards are issued three times during the school year. Teachers may send progress reports at any time. Parents are encouraged to regularly review their child's progress on Skyward, which is found on our school website or the Alpine School District website.

## DROP-OFF & PICK-UP GUIDELINES

Please follow all road signs including the entrance and exit. Use the lane nearest the curb (lane 1) as the drop-off and pick-up lane only. **THIS IS NOT THE LANE TO LEAVE YOUR CAR UNATTENDED EVEN FOR A FEW MINUTES.** The middle lane (lane 2) is for pulling in and out of lane 1 only and moving into lane 3 to exit the parking lot. **PLEASE DO NOT DROP OFF ANY CHILDREN FROM LANE 2!!** The outside lane (lane 3) is for thru traffic, pulling in and out of parking stalls, and to exit the parking lot. When dropping off or picking up your children, please pull as far forward as you can.



## DISCIPLINE

The goal of our school discipline plan is to teach children responsible for their own behavior and to make wise choices. When behavior occurs that is of significant nature, our school-wide communication form will be used.

## DRESS STANDARDS

We adhere to the guidelines set up by the Alpine School District policy 5152.

\*Appropriate clothing includes: knee-length shorts and skirts, tops covering shoulders, chest, back, and midriff. Clothing with inappropriate language or pictures is prohibited. If a student's appearance is inappropriate, the student may be asked to call home for a change of clothes.

\*Hairstyles distracting in appearance or needing constant attention are not acceptable. Hats should not be worn in the building.

\*Footwear such as flip flops are discouraged for safety reasons.

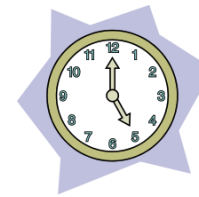


## INCLEMENT WEATHER

On rainy or bad winter days students will stay inside in the small gym. If the temperature or wind chill is below 20 degrees the students will be kept inside. We will also follow the Utah air quality guidelines to determine poor air quality.

## ARRIVING AT SCHOOL

Please do NOT send students to school early. We will have supervision at 7:45 and again at 9:00. In case of inclement weather, students may wait inside the building in the small gym, 15 minutes before school starts, which is 7:45 for 8:00 students and 9:00 for 9:15 students.



## FAMILY VACATIONS

Families are encouraged to take vacations during the summer and during school breaks. In the event that this is not possible, please inform your child's teacher. It is the parent's responsibility to contact teachers about make-up assignments. Please use the official form, provided by the school, to notify the teacher and the office in advance.

## **BICYCLES, SCOOTERS, SKATEBOARDS, ROLLARBLADES, ROLLER SHOES**

Please use the following guidelines:

1. Use only the sidewalk
2. Please walk bikes and scooters on the school grounds.
3. Park bikes in designated areas.
4. Roller shoes are not permitted inside the school.
5. Scooter are to be folded up and carried to the classrooms.



## **DISRUPTIVE ITEMS**

Students should not bring cell phones, iPod's, or toys to school. Such items may be taken away from the student and the parent will be required to pick the item up from school. We find sometimes these items are lost or stolen.