

## OUR VISION:

### EFFECTIVE COLLABORATION

Each Monday, students at Lehi Elementary are released one hour early for teachers to collaborate. Teachers working in collaborative teams afford a way for self-improvement while keeping student learning central.

Effective school research also shows positive outcomes for student learning in collaborative schools.

Programs in Alpine School District have validated the power of collaborative Professional Learning Communities. We are excited to use the time during collaboration to focus on four essential questions:

**What do we expect students to know and be able to do?**

**How will we know what students have learned?**

**How will we respond to students who aren't learning?**

**What will we do with students who already know?**

These four questions provide a framework for analyzing data, developing learning benchmarks, developing common assessments, comparing results, and implementing strategies focused on student learning. Through this process, teachers are able to identify strengths as well as areas that need improvement.

### 10 REASONS WHY LEHI ELEMENTARY IS SUCH A GREAT SCHOOL

#### 1. Friendly Student-Body, We are a Family

#### 2. Dedicated & Caring Faculty

#### 3. Extension Learning Programs

Gifted & Talented Program, Knowledge Bowl, Spelling Bee, New School-Wide Science Lab, Science Fair, Flex Time, Robotics Club

#### 4. Intervention Programs

Double Dosing for Math and Reading, Reading Recovery, Flex Time

#### 5. Fine Arts Programs

Band, Choir, New Arts Program, School Plays, Drama Club

#### 6. Well Maintained Facility & Grounds

#### 7. Professional & Helpful Support Staff

#### 8. Partnership Between School & Parents

#### 9. Supportive & Engaged PTA & School Community Council

#### 10. Innovative School that uses Technology



## Our Values

### L.I.O.N.S

Learning for All students is our primary aim

Individual students are our main focus

One Entity, we are united in purpose

Non-negotiables in core curriculum

Stay the course in implementing best practices



## Lehi Elementary Report Card

The State Office of Education has recently reported to the public the school grading report for 2014. This report assigns a letter grade to each school throughout the state. The grades are based on student proficiency and growth as reported on state standardized tests. As you know, this past year we had a major increase of rigor in instructional standards and the new SAGE tests. Due to the more rigorous requirements within the curriculums and assessments we anticipate a decrease in student proficiency and growth for the next two to three years. This occurs when there is a major change and it takes time to see a history of positive growth. The state has assigned Lehi Elementary the grade of "C" with an overall percentage of 49.33. This is very close to a "B" at a 51% score. We are pleased with this as we had anticipated a lower score. That being said, we feel confident that we will increase in the areas of student proficiency and growth this year as we have raised the bar for student achievement, and the students are meeting our expectations. Additionally, we have a better understanding of the SAGE test, its content and administration and we are investing in more technologies so the students are better prepared for the spring tests. We will be conducting interim SAGE testing in January to see where the students are and where we need to support them prior to the spring testing period. The school grade is only one indication of how a school is doing. What is not seen on any state report or grade is how the students feel about their school. What opportunities do they have and how you as parents partner with the school to benefit all students? Lehi Elementary is a great school. We have the best teachers and staff doing wondrous things each and every day. Students are happy and have plenty of enrichment activities to help them grow like our Gifted and Talented program, Spelling Bee, Knowledge Bowl, Science Fair, Band, Choir, Ballroom, Drama and arts classes. We provide support to each child who struggles through our Flex Time, Double Dosing, Reading Recovery and we have lots of school aides to work individually with below grade level students. We do have areas that we need to work on, and we know what they are and are committed to turn our weaknesses into our strengths. With the help of all of our stakeholders, we will continue to live by our mission statement which states; "Learning at High Levels for All Students." This is more than just a neat phrase; it is a statement that we strive to achieve everyday with every child.



## Stakeholder Report 2014-2015



### Mission Statement:

*"Learning at High Levels for ALL Students"*

765 N. Center Street

Lehi, Utah 84043

(801) 610-8712

[www.lehi.alpineschools.org](http://www.lehi.alpineschools.org)



# LEHI ELEMENTARY, PERPARING STUDENTS TO BE LIFE LONG LEARNERS SINCE 1951

We take pride in our school, our faculty and staff, and especially our students. Teachers work hard to ensure all students receive the education that they deserve.

With support of our parents and community, we know that we will continue the great tradition of excellence at Lehi Elementary. Go Lions!!



## WHAT IS SCHOOL COMMUNITY COUNCIL?

The Utah State Legislature created the Community Council to help bring local control to school governance. The School Community Council works with the school to identify areas of academic need, provide direction in the spending of School Land Trust monies and assist with school improvements.

## SCC MEMBERS

**SCC Chair:** Lance Madigan

**Vice Chair:** Susan Archibald

**Secretary:** Brittany Gray

**Parent Member:** Sharra Call, Amy Grace, Jodie Harris, Cali Southwick, Cathleen Tronson

**Teacher:** Liz Ash, Amy Sloan

**Principal:** Joel V. Miller



## MEETINGS FOR 2014-2015

September 18, 2014

November 20, 2014

January 22, 2015

February 9 & 10, 2015

March 19, 2015

All meetings are held in the Media Center or the Conference Room at 3:30. All meetings are open to the public. Agendas for the meetings are posted on the front doors of the school 24 hours in advance.



## Our Trustlands Funds for the 2014-2015 Total Funds Allocated to Lehi Elementary = \$33,404.00

**Goal #1:** Provide student support in Language Arts through our Double Dosing program. We have three teachers who teach before school classes to those students who are below grade level. Total cost for this goal is: **\$9,647.00** This covers the cost of the teachers salaries with benefits, and materials and supplies. (We receive a \$6,000.00 grant from the district to offset the cost of this goal.)

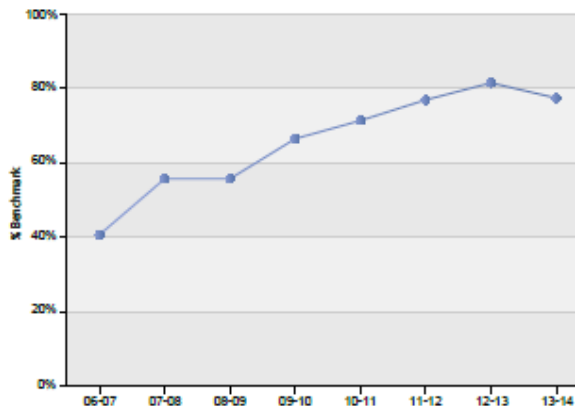
**Goal #2:** Provide student support in Math through our Double Dosing program. We have three teachers who teach before school classes to those students who are below grade level. Total cost for this goal is: **\$15,260.00** This covers the cost of the teachers salaries with benefits, and materials and supplies.

**Goal #3:** We have established our own Gifted and Talented program and have hired two of our teachers to teach these classes before school. Total cost for this goal is: **\$6,498.00** This covers the cost of the teachers salaries with benefits, as well as materials and supplies.

**Goal #4:** Our new arts program funded through the Beverley Taylor Sorenson Grant allowed us to hire an art teacher. Trustlands funds are being used to purchase materials, supplies and equipment. Total cost is: **\$1,999.00**

## Historical School DRA Data

Our current data reflects an increase of rigor in the 2013-2014 school year. Students are now required to reach one and a half grade levels above the previous years benchmarks.



## Celebrations!!!



- \* Partnership with IM Flash.
- \* Gifted & Talented program.
- \* Received a technology grant for an additional lap top computer lab and other interactive Smart technologies.
- \* Beverly Taylor Sorenson Arts Education program during the school day. Drama club and school play this year.
- \* Raised over \$42K in fundraisers, donations and grants.



The Lehi PTA welcomes volunteers to help in various programs and activities that are held throughout the year. These include the Fall Carnival, Ribbon Week, the School Play, Dudes & Donuts, Field Day, Teacher Appreciation Week and much, much more.

## 2014-2015 PTA Leadership

President  
President Elect  
Secretary  
Treasurer  
Publicity

Amy Grace  
Nicole Soderquist  
Sharon Anderson  
Sharra Call  
Lance Madigan

