

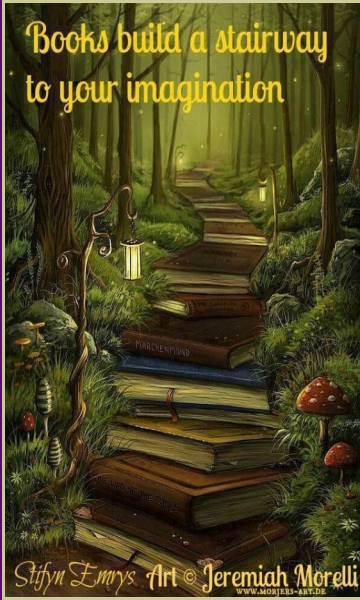


Our Mission:
 "Learning at High Levels for All Students."

Our Vision:
 "Effective Collaboration."

Our Values:

- L.I.O.N.S.**
L = Learning for ALL is our Primary Aim.
I = Individual Students are our Main Focus.
O = One Entity, We are United in Purpose.
N = Non-Negotiables, in the Core Curriculum.
S = Stay the Course in Implementing Best Practices.



~January Calendar~

- 5th.....First day back from break
- 6th.....PTA meeting at 10:00 AM
- 14th.....3rd Grade Dudes & Donuts
- 19th.....Martin Luther Kind Day
- 22nd.....SCC meeting at 3:40 PM
- 23rd.....School Spelling Bee

Lehi Elementary School

"Learning at High Levels for All Students"

January 2015

Principal's Message

The last week of December was very busy. We enjoyed the Christmas Sing which showcased the talents of all of our wonderful students. We appreciate Mrs. Gottfredson and Mrs. Reid for organizing the sing and for Mrs. Jones for much of the accompaniment. During the Christmas sing, our Drama Club performed a delightful play



to help us all get even more into the holiday mood. Special thanks to the Drama club and their directors, Ms. Grgich, Ms. Williams and Mrs. Gottfredson. There was some serious acting going on. Additionally, we enjoyed performances from our Ballroom Club. They did several numbers that were so fun to watch. Thanks to Mrs. Whiteley and Wood for directing this performance.



Even Leo our mascot got into the Christmas spirit and we had a fun visit from Santa Claus on the last day before the

break. We also had all of the classroom parties. What a day! December has come and gone and now we kick off the second half of the year with many exciting opportunities.



Later this month we will have the Spelling Bee for 4th - 6th grade students. This will be a great opportunity for those participating to expand their vocabulary and compete for the coveted title of King Bee or Queen Bee.



Additionally, this month will be a time for the 5th and 6th graders to prepare for the Science Fair which will be during the first week of February. Clayton Grace, one of our amazing dads, is spearheading the fair this year. This will be an exciting and fun learning opportunity for all those students participating. Robotics Club will be starting up again. Gifted and Talented (G/T) is continuing on with several classes available to students who qualified to participate, and Read Across America is another event to look forward to in this second half the year. This month we will be testing the 3rd -6th grade students on SAGE Interim Assessments. This is not the summative, end of year exams that we will be



doing later in the year, but these tests will help us have a clearer understanding of where the students are academically in preparation for the summative exams. We will be able to identify areas of strengths and weaknesses so we can provide more support to struggling students and deeper enrichment to those who are meeting all the core standards. We are very optimistic about how we as a school will do this year on the summative SAGE exam. Last year the exams were new and more rigorous. This year we will be more prepared going into the tests with a greater understanding on how the test is administered and the requirements are for achievement. Additionally, we have rubrics that are more targeted than what we have had in the past. Although we are assessing a lot, we are not missing out on all that is required to be taught. The assessments are tools that we use to help us gauge how the students are doing and if we need to adjust our teaching for each child's success. Not only are we preparing students for the next level of their learning but we are preparing them to be productive and caring adults in our society. That which they learn in elementary school is the foundation to life's lessons and a love of life long learning.



~Principal Miller

Friend us on Facebook at the **Lehi Elementary PTA** page
Lehi Elementary

765 N. Center St.
 Lehi, UT. 84043
 Phone: 801 610-8712
 Fax: 801 768-7022

Visit our website at www.lehi.alpineschools.org

