

OUR VISION:
EFFECTIVE COLLABORATION

Each Monday, students at Lehi Elementary are released one hour early for teachers to collaborate. Teachers working in collaborative teams afford a way for self-improvement while keeping student learning central.

Effective school research also shows positive outcomes for student learning in collaborative schools.

Programs in Alpine School District have validated the power of collaborative Professional Learning Communities. We are excited to use the time during collaboration to focus on four essential questions:

What do we expect students to know and be able to do?

How will we know what students have learned?

How will we respond to students who aren't learning?

What will we do with students who already know?

These four questions provide a framework for analyzing data, developing learning benchmarks, developing common assessments, comparing results, and implementing strategies focused on student learning. Through this process, teachers are able to identify strengths as well as areas that need improvement.

10 REASONS WHY LEHI ELEMENTARY IS SUCH a GREAT SCHOOL

1. Friendly Student-Body, We are a Family



2. Dedicated & Caring Faculty

3. Extension Learning Programs

Gifted & Talented Program, Knowledge Bowl, Spelling Bee, New School-Wide Science Lab, Science Fair, Flex Time

4. Intervention Programs

Double Dosing for Math and Reading, Reading Recovery, Flex Time

5. Fine Arts Programs

Band, Choir, New Music Program, School Plays, Drama Club

6. Well Maintained Facility & Grounds

7. Professional & Helpful Support Staff

8. Partnership Between School & Parents

9. Supportive & Engaged PTA & School Community Council

10. Innovative School that uses Technology

Our Values
L.I.O.N.S

L Learning for ALL Students is our

Primary Aim

I Individual Students are our

Main Focus

O One Entity, We are United in Purpose

N Non-Negotiables in Core Curriculum

S Stay the Course in Implementing

Best Practices



Lehi Elementary Report Card

Lehi Elementary school grade for the 2012-2013 school year, is at 70% or rather a school grade of "B". We are above the state average and we are in the top half of the Alpine School District. The State rates schools on Achievement Points and Growth Points. We scored 233 out of 300 points in Achievement, which is at 78%. Our Growth Points were 185 out of 300, this is 62%. Our combined score or "School Performance" score is 418 out of 600 points.

Overall, we are doing well but we recognize what we need to do to increase our scores. As part of our School Improvement Plan to increase student proficiency in Language Arts, Math, and Science and as outlined in our School Trustlands plan, we have increased the number of teachers teaching Double Dosing from two Reading teachers to three and two Math teachers to three. This will allow us to increase the number of students in Double Dosing to receive the intervention with a teacher who teaches at their grade level, 1-2 grades, 3-4 grades and 5-6 grades. We are using our Flex time for targeted remediation and academic extensions and making adjustments to our teaching based on analysis of student learning data. We have also begun a Gifted and Talented program this year to give students the opportunity to go deeper into the core curriculum for greater understanding, growth, and academic achievement.

Lehi Elementary School



Stakeholder Report
2013-2014



Mission Statement:

"Learning at High Levels for ALL Student"

765 N. Center Street

Lehi, Utah 84043

(801) 610-8712

www.lehi.alpineschools.org



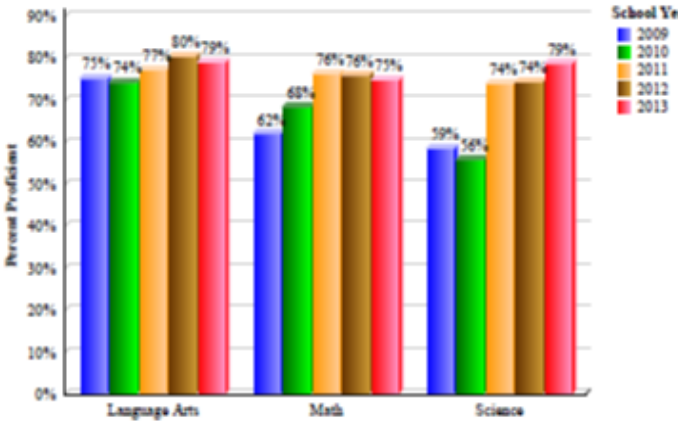
HOW LEHI STUDENTS SCORED ON STATE TEST IN SPRING 2013

We take pride in our school, our faculty and staff, and especially our students. Teachers work hard to ensure all students receive the education that they deserve.

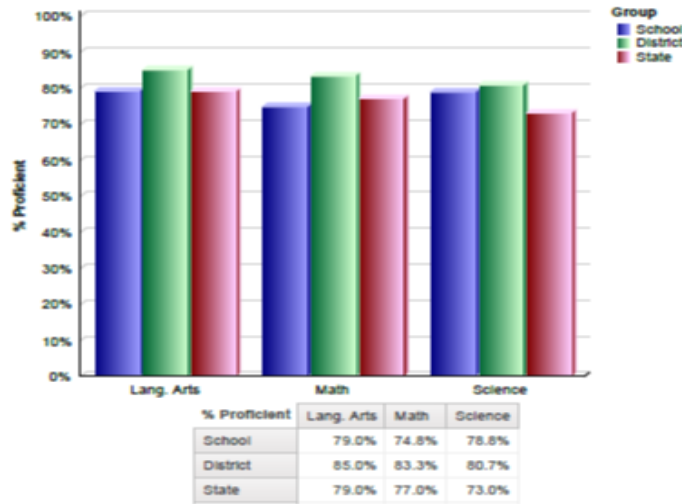
With support of our parents and community, we know that we will continue the great tradition of excellence at Lehi Elementary. **Go Lions!!**



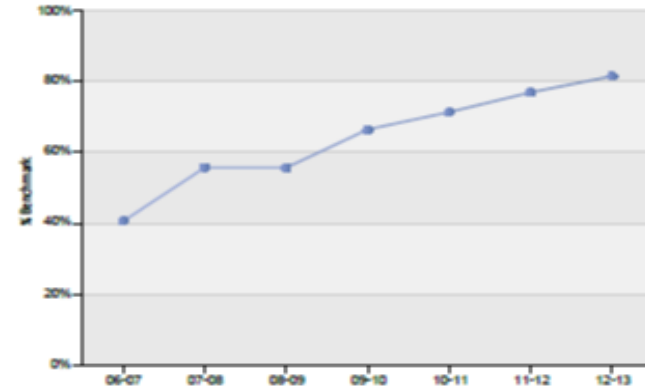
Historical School CRT Data



2013 CRT Comparison to District and State



Historical School DRA Data



WHAT IS SCHOOL COMMUNITY COUNCIL?

The Utah State Legislature created the Community Council to help bring local control to school governance. The School Community Council works with the school to identify areas of academic need, provide direction in the spending of School Land Trust monies and assist with school improvements.

SCC MEMBERS

SCC Chair: Susan Archibald

Vice Chair: Gayle Christensen

Secretary: Brittany Gray

Parent Member: Sharra Call,

Lance Madigan, Rae Garn

Teacher: Liz Ash

Principal: Joel V. Miller



MEETINGS FOR 2013-2014

September 26, 2013

November 21, 2013

January 23, 2013

February 20, 2013

March 20, 2013

All meetings are held in the Media Center or the Conference Room at 3:30. All meetings are open to the public. Agendas for the meetings are posted on the front doors of the school 24 hours in advance.

Celebrations!!!



- * Partnership with IM Flash to build our science lab.
- * Establishment of a Gifted & Talented program.
- * Received a technology grant for an additional lap top computer lab.
- * New Music Education program during the school day. Drama club and school play this year.



The Lehi PTA welcomes volunteers to help in various programs and activities that are held throughout the year. These include the Fall Carnival, Ribbon Week, the School Play, Field Day, and much, much more.

2013-2014 PTA Leadership

President

Amy Grace & Heather Rasmussen

Secretary

Jenny Hoover

Treasurer

Kristi Askew

Leadership VP

Nicole Soderquist

