



Welcome to our School

Lehi, the northernmost community in Utah Valley, was first settled by a small group of Mormons in the fall of 1850. Known as Sulphur Springs that first year, the community later was named Dry Creek and then Evansville. Early in 1852 local bishop David Evans presented a petition to the Utah Territorial Legislature requesting that the community be incorporated. This request was granted on 5 February 1852, making the town Utah's sixth oldest. "Lehi is a good place to live," has been the community's official slogan since 1911.

Lehi Elementary was built in 1951 and has a rich history of education. We have had hundreds of teachers, and thousands of students. Many parents, and even some grandparents, of current students attended Lehi Elementary!

We are the home of the Lehi Lions. Our school colors are purple and gold.

OUR STUDENTS BY THE NUMBERS

2011	Count	Percentage
Female	338	49.3%
Male	348	50.7%
American Indian	5	0.7%
Asian	1	0.1%
Black	2	0.3%
Caucasian	628	91.5%
Hispanic	39	5.7%
Pacific Islander	8	1.2%
Unidentified	3	0.4%
ESL	29	4.2%
Special Education	73	10.6%

OUR VALUES: L.I.O.N.S

The underlying principles that govern our work:

- L = Learning for ALL is our Primary Aim
- I = Individual Students are our Main Focus
- O = One Entity, We are United in Purpose
- N = Non-negotiables in the Core Curriculum
- S = Stay the Course in Implementing Best Practices



A DEDICATED FACULTY

Average years at Lehi Elementary	10
Average years in Education	14
Degrees earned from BYU	10
Degrees from Utah Valley University	9
Degrees from the University of Utah	2
Degrees from Utah State	2
Degree from each: Westminster, Fort Lewis (in Colorado), and St. John College of Cleveland	1

Teachers hold a Masters Degree	5
Special Education Endorsements	4
Early Childhood Endorsements	5
English as a Second Language Endorsements	3
Reading Endorsements	2
Endorsement in each: PE and Keyboarding	1



LEHI ELEMENTARY SCHOOL



Stakeholders Report 2012



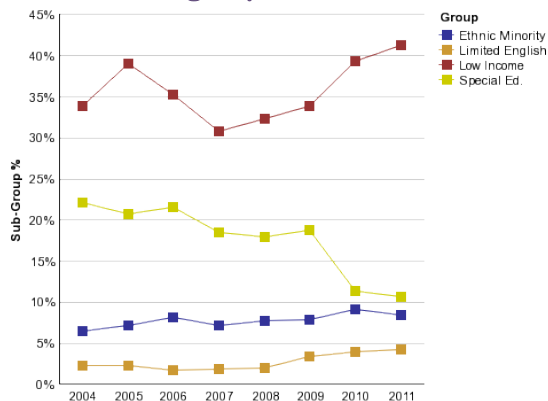
The mission of Lehi Elementary is learning at high levels for all students.

765 North Center Street
Lehi, UT 84043
Phone: 801-610-8712

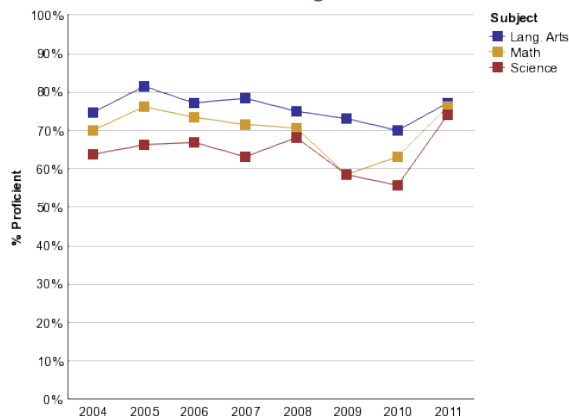
HOW LEHI STUDENTS SCORED ON STATE TEST IN SPRING 2011

We take pride in our school, our faculty and staff, and especially our students. Teachers work hard to ensure all students receive the education that they deserve. With support of our parents and community, we know that we will continue the great tradition of excellence at Lehi Elementary. Go Lions!!

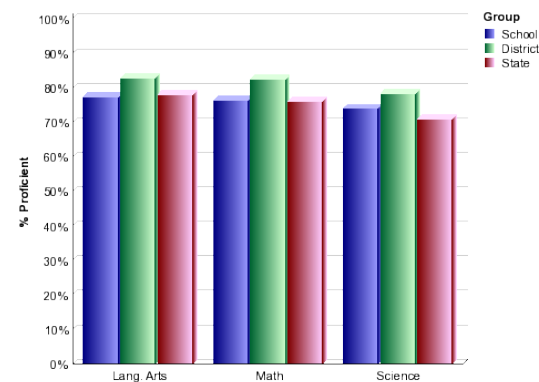
Demographic Trends



End of Year State CRT Proficiency Trends



2011 CRT Comparison to District and State



WHAT IS A SCHOOL COMMUNITY COUNCIL?

The Utah State Legislature created the Community Council to help bring local control to school governance. The School Community Council helps to identify areas of academic need, provide direction in the spending of School Land Trust monies, and create safe walking routes to and from school.

SCC MEMBERS

SCC Chair: Amy Grace
Vice Chair: Teresa Gonzalas
Secretary: Cathleen Tronson
Parent Member: Brittney Gray
Teachers: Carol Oliphant, Debbie Farnsworth
Principal: Jane Friel

MEETINGS FOR 2011-2012

September 20, 2011
 November 8, 2011
 February 28, 2012
 March 20, 2012

All meetings are held in the Media Center at 3:30. All meetings are open to the public. Agendas for the meetings are posted on the front doors of the school 24 hours in advance.



The Lehi PTA welcomes volunteers to help in various programs and activities that are held throughout the year. These include the Fall Carnival, Ribbon Week, the School Play, Field Day, and many, many more.

2011-2012 PTA Leadership

President	Sharra Call
President-elect	Jennica Scott
Secretary	Sara Madigan
Treasurer	Mindy Price
Leadership VP	Rebecca Dilts



OUR VISION: EFFECTIVE COLLABORATION

Each Monday, students at Lehi Elementary are released one hour early for teachers to collaborate. Teachers working in collaborative teams afford a way for self-improvement while keeping student learning central.

Effective schools research also shows positive outcomes for student learning in collaborative schools.

Programs in Alpine School District have validated the power of collaborative Professional Learning Communities. We are excited to use the time during collaboration to focus on four essential questions:

- 1) What do we expect students to know and be able to do?
- 2) How will we know what students have learned?
- 3) How will we respond to students who aren't learning?
- 4) What will we do with students who already know?

These four questions provide a framework for analyzing data, developing learning benchmarks, developing common assessments, comparing results and implementing strategies focused on student learning. Through this process, teachers are able to identify strengths as well as areas that need improvement.